



CHALLENGE CUP & NK KUNSTRIJDEN

DE UITHOF, DEN HAAG



20 - 23 FEBRUARI 2020

SCHAATSEN.NL/CHALLENGECUP

ATHLETE GUIDE 2020



Partners van schaatsend Nederland



| Preface

Dear All,

Please let me take this opportunity to welcome you to the Challenge Cup & National Championships Figure Skating 2020.

We have tried to make this competition as comfortable and enjoyable as we can for you all. We have taken great care in selecting appropriate accommodation and we realize that an optimal transport service is key in your preparations.

The city of The Hague is proud of hosting this sporting event. Its population is looking forward to cheer you on. For you who have some spare time: the town offers great possibilities for sightseeing, dining, relaxing, shopping and partying.

Our aim is to provide four great days of action. Therefore we appreciate your participation and commitment to this competition. If there is anything that we can do to improve the Challenge Cup, now or in the future, please let us know.

We wish you all the best on and off the rink this week. Skate well!

Kind regards,



Warmolt Venhuizen

Chairman OC Challenge Cup



Partners van schaatsend Nederland

| Content

1 Organisation	5
2 Maps and addresses	6
Venue	6
Hotel	6
Ground Floor Plan	7
First Floor Plan	8
3 Practical information.....	9
Actual information	9
Opening Hours.....	10
Calamities	10
Accreditation	11
Tickets.....	11
Catering	12
Transportation.....	12
Livestream	14
Valuables	14
Skate sharpening and boot repair service.....	11
4 Challenge Cup Competition	15
Draws.....	15
Time schedule Challenge Cup	15
Unofficial Training Schedule.....	15
Warming-up	15
Music.....	15



| Video 16

| Anti-doping.....17

| Memo Sharing of personal data.....17

1 | Organisation

| Dutch Skating Federation (KNSB)

Mississippidreef 153

3565 CE Utrecht

The Netherlands

Telephone: +31 884892000

Website: www.schaatsen.nl/challengecup

E-mail: challengecup@KNSB.nl

| Organizing committee

Chairman	Warmolt Venhuizen
Competition - Finance	Harm Jan Visser
Competition	Kobie Achterberg
Logistic / Technical	Wim Kraayenzank
Volunteers	Sandra Verbeek
Transport	Jacob Noordhoek
Projectmanager KNSB	Ellen Reijmer
Projectemployee KNSB	Kim de Wit

2 | Maps and addresses

| Venue

Competition and Practice Events will be held at:

Sports Centre De Uithof

Jaap Edenweg 10,
2544 NL Den Haag
Phone +31 70 32 99 991

Parking? There is a car park (free) at the ice Rink.

| Hotel

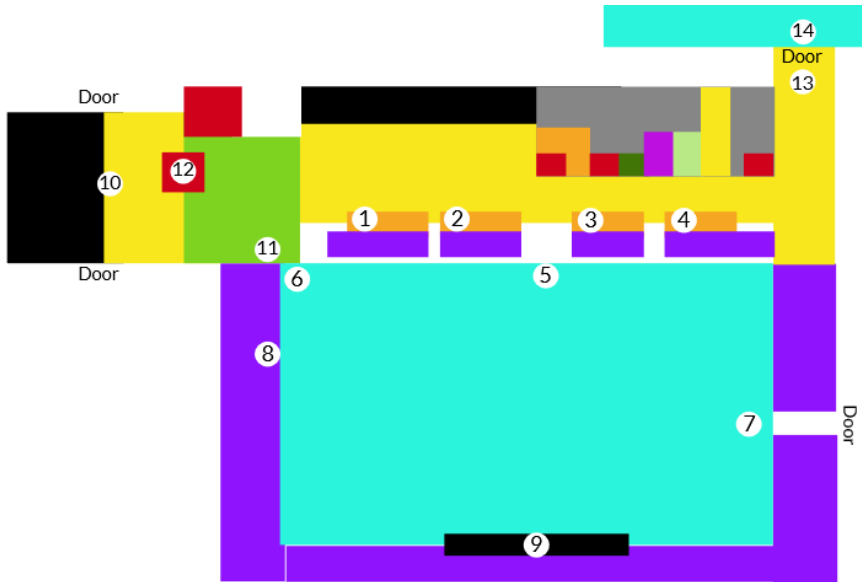
Official Hotel 1

Hotel NH Atlantic
Deltaplein 200
2554 EJ Den Haag
Phone: +34 91 398 46 61
www.nh-hotels.com/hotel/nh-atlantic-den-haag

Official Hotel 2

Hotel Best Western Plus Grand Winston
Generaal Eisenhowerplein 1
2288AE Rijswijk/Den Haag
<https://plazahotels.de/en/hotel-den-haag/>

| Ground Floor Plan

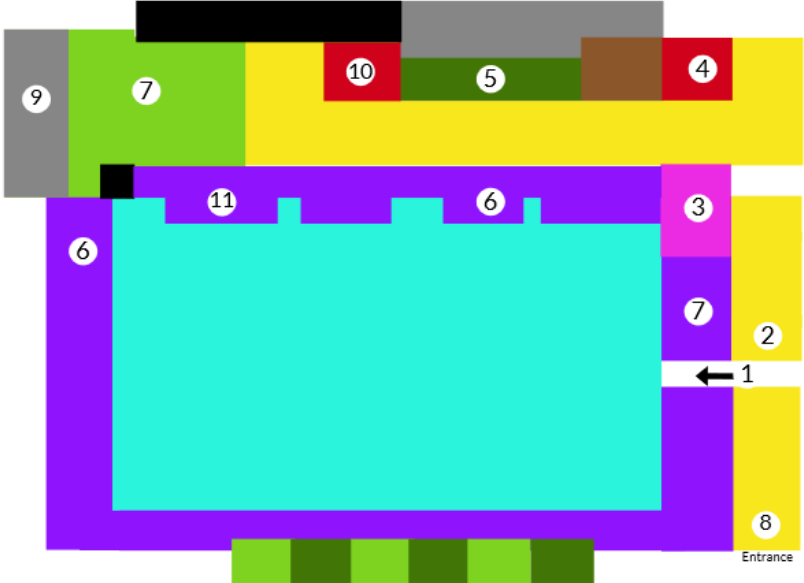


1	Dressing Room	9	Jury
2	Dressing Room	10	Warm Up
3	Dressing Room	11	Mixed Zone
4	Dressing Room	12	First Aid
5	Ice On	13	Hallway to Practice Rink
6	Ice Off	14	Practice Rink
7	Zamboni Entrance		
8	Kiss and Cry		



Partners van schaatsend Nederland

| First Floor Plan



1	Entrance to tribune	7	Press Room
2	Hallway	8	Entrance
3	OC Room	9	Volunteers Room
4	Accreditation & Music room	10	Restroom
5	VIP Room	11	Press Tribune
6	VIP Tribune		

3 | Practical information

| Actual information

All information will be published in the Sportity app. Please download the app and insert the password below. The information is also available at

www.schaatsen.nl/challengecup

Sportity app

Scan the QR code and insert the password.



| Opening Hours

OC Office

Wednesday 09.00 till 20.00 hours
Thursday - Sunday 07.00 till end of competitions

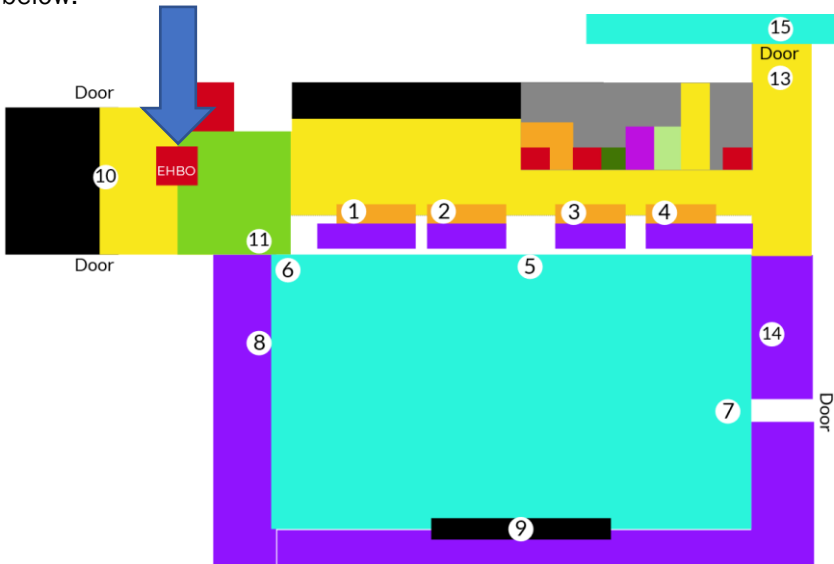
Accreditation office

Wednesday 09.00 till 20.00 hours
Thursday - Sunday 07.00 till end of competitions

| Calamities

First Aid

During the competition days there is an First Aid on the **ground floor**. There is an professional emergency team FASE on site. See picture below.



Calamities

On the venue there will be security on important places. The security will be recognized with the 'ROC Mondriaan' clothes. When danger occurs, warn these people. They take further action.

| Accreditation

Athletes, coaches, team leaders, officials and chaperones are kindly requested to wear their accreditation card in a visible way for access to the transportation (transport accreditation will be provided for shuttlebus when paid for), dressing rooms and rink. This is to ensure that the areas are prohibited for unauthorized persons. You can pick up your accreditation per team at the Accreditation Office.

Accreditation and transport ticket will only be given if all fees are paid, cash payment only (bring your invoice or payment confirmation).

Invoices will be send to the federations in advance.

The entry fee and transportation fee will not be refunded in case of withdrawals for any reason.

| Tickets

Tickets are available for purchase online and at the ice-rink.

Day ticket

Thursday	€ 5,00
Friday till Sunday	€ 6,50
Passe-partout:	€15,00

Link <https://www.schaatsen.nl/tickets/>

| Skate sharpening and boot repair service

A skate sharpening and boot repair service facility is available at the shop just opposite of the Ice Rink.

| Catering

Breakfast, lunch, diner

For Best Western

Breakfast	Monday- Friday	06.00 – 10.00
Breakfast	Saturday-Sunday	06.00 – 11.00
Lunch	Monday- Sunday	A la carte
Diner	Monday- Sunday	A la carte

For NH Atlantic

Breakfast	Monday-Friday	07.00-10.00
Breakfast	Saturday-Sunday	0700-11.00
Lunch	Monday-Sunday	A la carte
Diner	Monday-Sunday	A la carte

There is a special sporters menu available, please check the information board in the lobby of the hotel.

Food and drinks

There is some fruit and water available in the dressing rooms. Other food & drinks are self-service.

| Transportation

There will be transportation between Amsterdam Airport and the official hotel, from Monday February 17th afternoon till Monday morning February 24th, for team members who have paid the transportation fee.

If you have any questions about transport, please ask at the OC office.

Arrival Schiphol (Amsterdam)

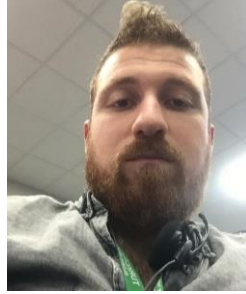
After your arrival, you will be awaited at your gate. There will be a host whom pick you up (see picture below). The host will guide you to the vehicle which will be ready to transport you one of the official hotels. When there is no host at the gate please walk to the **La Place** (see picture below) restaurant at the arrival hall.

12

Questions about transportation? : Call Bert +316 5025 4285



Bert



Mustafa

Pick up board at the gate



La place



Hotels – Ice Rink

There will be transportation between the 2 official hotels and the Ice Rink de Uithof during the competition days and the training periods (see bus schedule), starting from Thursday, February, 20st till Sunday, February, 23th.



Transportation boards

Bus Schedule

Shuttles will depart every hour from the hotels to the Ice Rink, see bus Schedule at the hotel or in the Sportity app.

This is ONLY for team members who have paid the transportation fee.

Parking

There is a parking place at the hotels and at the venue.

| Livestream

During the competition there will be a live stream

www.schaatsen.nl/challengecup

| Valuables

In accordance with Rule 119 of the ISU General Regulations, the ISU, the Dutch Skating Federation and The Organizing Committee assume no responsibility for or liability with respect to bodily or personal injury or property damage incurred in connection with the Challenge Cup. Each Member is solely responsible for providing insurance coverage thereto.

14

4 | Challenge Cup Competition

| Draws

The draw for short program will take place in the Official Hotel Atlantic on Wednesday February 19 at 17.00 hours. The starting order for the free program shall be based on the reverse order of the result of the short program.

Location: NH Atlantic Hotel

| Time schedule Challenge Cup

All updated information will be published in the Sportity app.

| Unofficial Training Schedule

The Organizing Committee (OC) will arrange unofficial practice ice training on the practice rink on Tuesday and Wednesday for all participating teams. Please use the entry form which was send before to all the teams. The OC will make a schedule. Price per 60 min/person is € 20,- based on at least 8 skaters on the ice. Price per 75 min/person is € 25,- based on at least 8 skaters on the ice. You can pay this fee at the accreditation office on Wednesday February 19. You need to arrange your own transport to the ice rink. There is only medical service of the ice rink De Uithof available. The OC has not arranged extra medical service on these days and the OC is not responsible of any accidents on these days.

Contactperson: Esther de Groot, challengecup@knsb.nl.

Practice schedule and all updated information will be published in the Sportity app.

| Warming-up

There is an off-ice warming up area as indicated in the map of the Ice Rink and signs will be present.

| Music

All Competitors shall deliver competition music of excellent quality on CD, in accordance with Rule 343, paragraph 1. A list of titles,

15

composers and orchestras of the music to be used for the Short Program and Free Program for Single and Pairs, for the Exhibition must be listed for each Competitor on the official Music Selection Form and attached to the official Entry Form for Competitors.

We prefer to receive your competition music digital on MP3 format (the file format must be MP3). This MP3 file must have Competitor`s name, Member`s name and the category and segment. You must upload the music on: <https://forms.gle/EXehBSvgaQzmfdi58> before the entry deadline of February. Competitors must have a backup drive for each program.

In accordance with Rule 343, paragraph 1, all CDs must show the Competition event, Competitor`s name, the Nation and the exact running time of the music (not skating time) including any starting signal and must be submitted at the time of registration. Each program (short program, free skating) must be recorded on one track and on a separate CD. In addition competitors/couples must provide a back-up CD for each program. If music information is not complete and discs/MP3 not provided, accreditation will not be given. With the entry forms, the “Program Content Sheet” must return to the Organizing Committee in time. It is mandatory that the Program Content Sheet must be filled in precisely by each skater/team in English using the terminology for the elements listed in the respective ISU Communication.

| Video

During the Challenge Cup 2020 all programs will be recorded in High Definition Video, shot from two boarding side camera`s, one overview camera and a camera at the Kiss & Cry area. All participants are offered the opportunity to buy the recorded video material for which we have the following options available:

- 1) Raw uncut video recording from our main boarding camera, cost will be € 12,50 all taxes included;
- 2) Raw uncut video recording from both our boarding camera`s,

16



supplied as two separate files, cost will be € 25,00 all taxes included;

3) A simple video production will be made with both audio and video normalised and optimised and best shot options chosen from our two boarding side camera positions, cost will be € 40,00 all taxes included.

All cost mentioned are based on production work for a single program, if you require or fancy ordering both Short and Free Skate please understand we will see this as two orders and provide us with your option of choice for each. All orders are fulfilled by presenting you with an e-mail that includes a download link to the production of your choice. Lead-times are as follows: Option 1 - 10 working days after receipt of payment, Option 2 - up to 15 working days and Option 3 cup to 20 working days after receipt of payment.

To order your video production please go to our web store, <https://showyourskill.online/shop/>, select the Challenge Cup video production category and choose your option(s). Ones selected go to checkout, complete the check-out form and place your order.

Please be aware account confirmation e-mails do end up in peoples spam or junk folders every now and then so keep an eye on those.

Thanks for your interest and we look forward to creating beautiful memories both with and for you.

The Show Your Skill .Online team.

| Anti-doping

Anti-Doping tests will be carried out according to the ISU Anti-Doping Code, as given in the applicable ISU Communications.

| Memo Sharing of personal data

The General Data Protection Regulation (GDPR) applies in the Netherlands. The organization of this event also has to comply to this legislation and we would like to inform you that we will respect the privacy and personal privacy of our members and participants in accordance with the GDPR.

17

In addition to the legal regulations on privacy we have mentioned our privacy policy on our website www.KNSB.nl of the Dutch Skating Association.

Specifically for this competition we let you know that we deal with personal data as follows:

- a. Participant list; a list of participants is shared as a “starting list” with the commissionaires, judges and the audience. On this list we share, name, gender, country
- b. Results; a list of results published after each competition.
- c. Photo, video and image material

In order to promote the event and for press publications, pictures will be made and published.